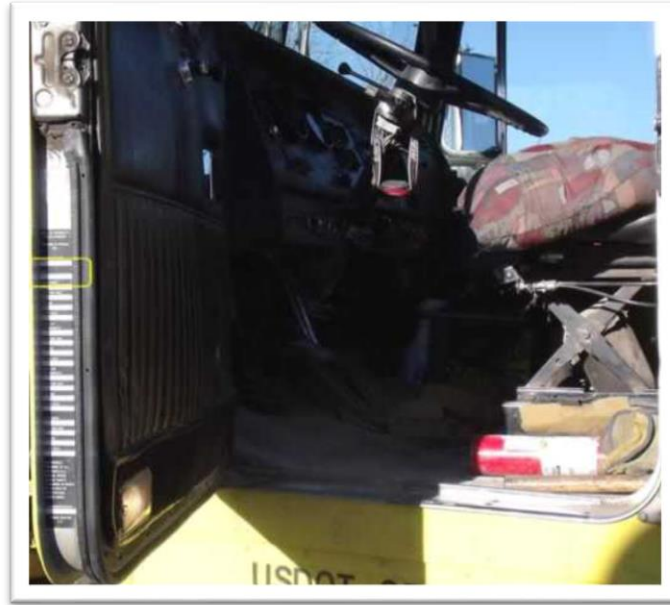


Gross Vehicle Weight Rating (GVWR)

To clarify the Gross Vehicle Weight Rating (GVWR) for your qualifying truck(s), please attach a photograph of the sticker located on the inside of the driver's side doorframe showing the Manufacturer's GVWR. One photograph of the GVWR is required per truck.

Below is an example of where the sticker is located. The GVWR is highlighted in the rectangle.



The following are a few examples of labels from different manufacturers. The GVWR is highlighted in the rectangle.



For additional information, assistance, or to receive application materials, please contact us by:

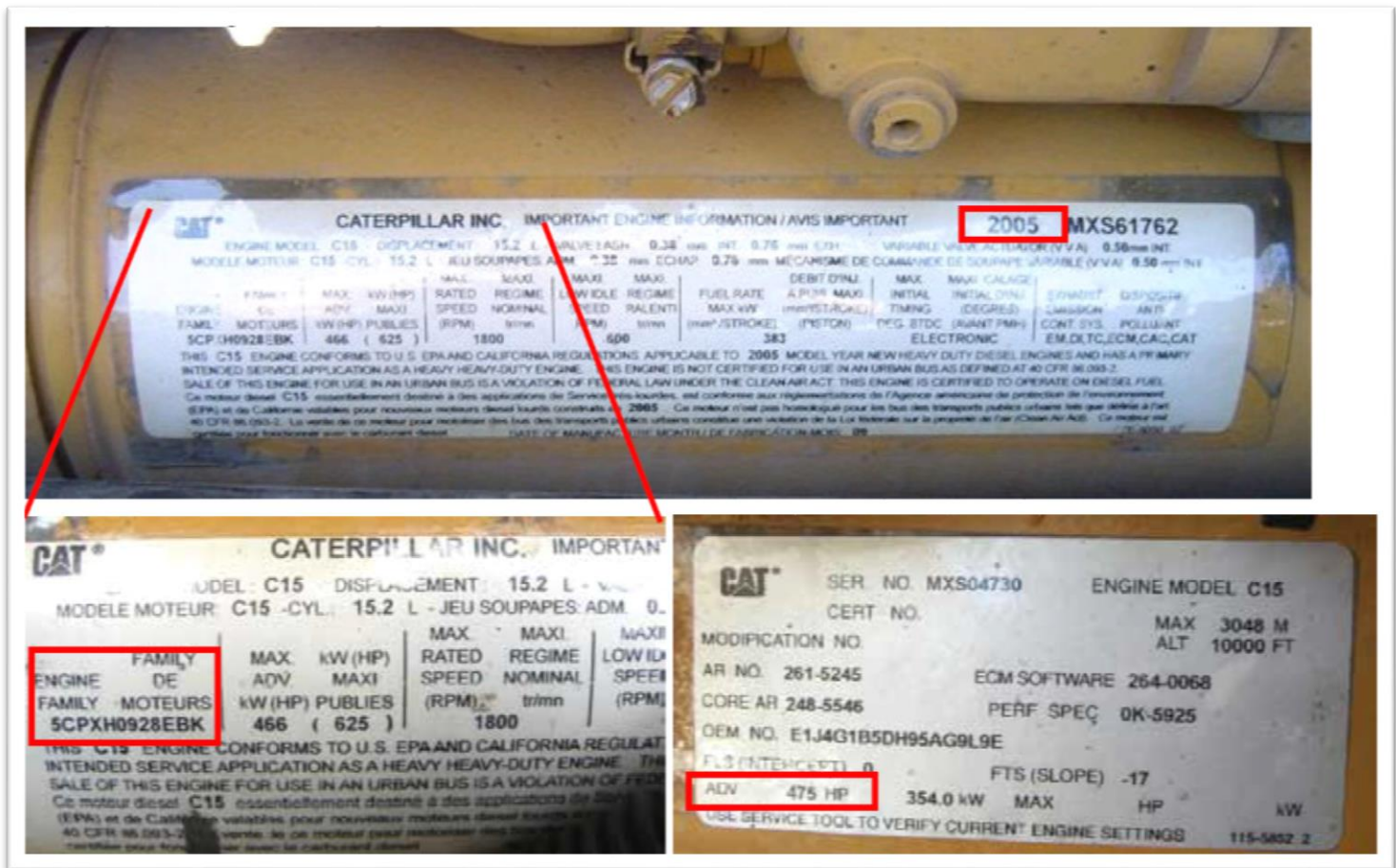
Website: <http://www.panynj.gov/truckers-resources/truck-replacement.html>

Email: panynj@tetrattech.com | Phone: (866) 515-1716

Locating the EPA Engine Family Name (EFN) and Engine Specifications

The EPA engine family name is a 12 character number/letter designation included on the engine nameplate for all heavy duty truck engines. The nameplate, or sticker, is permanently affixed to the engine. The exact location and appearance of the sticker varies by engine manufacturer. Examples of nameplates from three major engine manufacturers are included below:

Caterpillar Engine Example:



Example (From Above Photograph):

Caterpillar Engine Family Name: 5CPXH0928EBK
 Engine Model Year: 2005
 Engine Horsepower: 475 HP

For additional information, assistance, or to receive application materials, please contact us by:

Website: <http://www.panynj.gov/truckers-resources/truck-replacement.html>

Email: panynj@tetrattech.com | Phone: (866) 515-1716

Locating the EPA Engine Family Name (EFN) and Engine Specifications (Continued)

Cummins Engine Example:



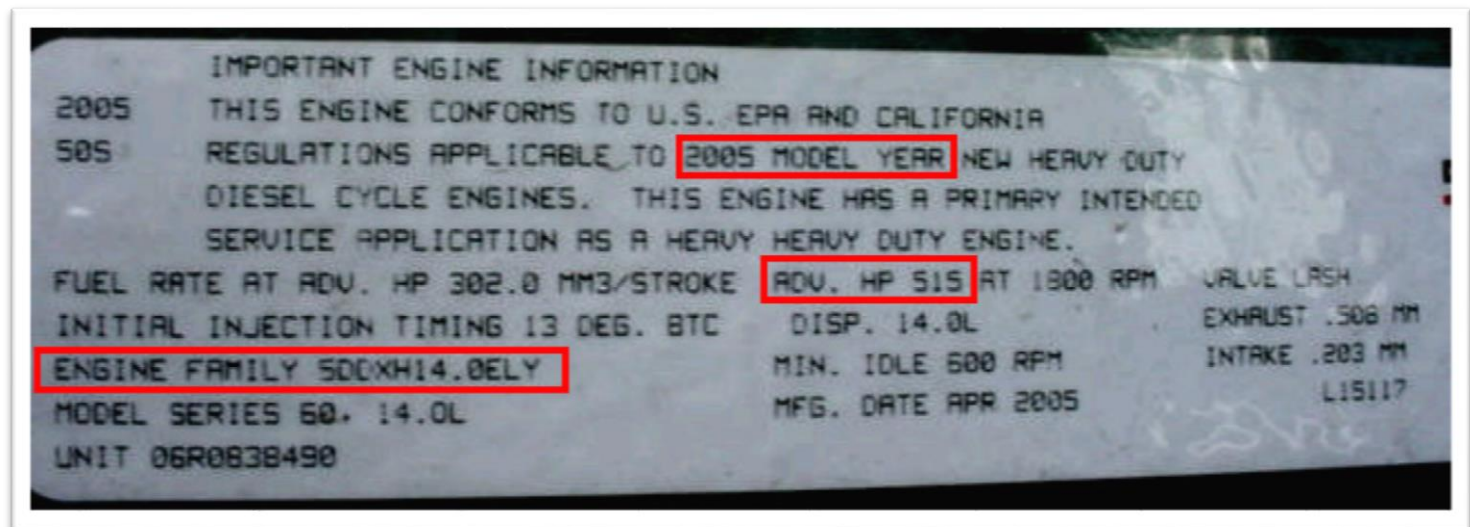
Example (From Above Photograph):

Cummins Engine Family Name: 4CEXH0912XAJ

Engine Model Year: 2004

Engine Horsepower: 400 HP

Detroit Diesel Engine Example:



Example (From Above Photograph)

Detroit Diesel Engine Family Name: 5DDXH14.0ELY

Engine Model Year: 2005

Engine Horsepower: 515 HP

For additional information, assistance, or to receive application materials, please contact us by:

Website: <http://www.panynj.gov/truckers-resources/truck-replacement.html>

Email: panynji@tetrattech.com | Phone: (866) 515-1716