

13-Month Runway Utilizations for JFK, LGA, EWR, SWF, and TEB

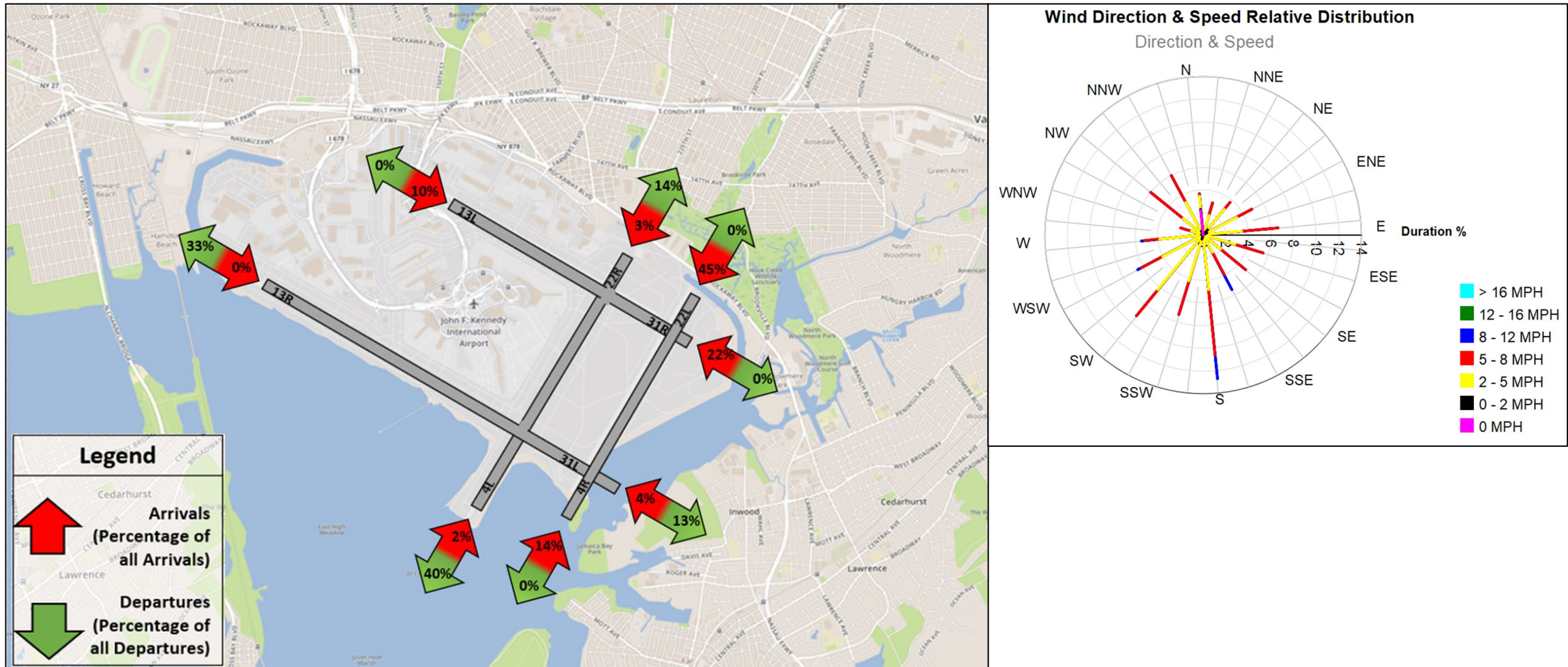
August 2024

JFK Runway Utilization – Monthly Comparison

Month	Total Operations	4L Arr	4L Dep	4R Arr	4R Dep	13L Arr	13L Dep	13R Arr	13R Dep	22L Arr	22L Dep	22R Arr	22R Dep	31L Arr	31L Dep	31R Arr	31R Dep	Unk Arr	Unk Dep
Aug - 2023	41,715	596	4,688	4,921	0	1,579	5	12	1,990	9,526	0	975	8,713	710	5,467	2,505	10	4	11
Sep - 2023	38,417	1,201	8,519	8,408	0	886	1	3	1,201	5,925	0	417	5,281	554	4,212	1,779	12	4	14
Oct - 2023	39,824	627	4,707	4,891	1	2,795	12	22	3,507	5,439	1	434	4,114	1,097	7,523	4,576	65	5	14
Nov - 2023	37,716	520	3,937	4,133	0	895	31	1	1,117	6,377	0	661	5,314	1,338	8,408	4,911	55	3	8
Dec - 2023	39,135	869	6,292	6,432	0	1,047	3	3	1,243	6,176	1	577	5,561	854	6,461	3,590	14	3	9
Jan - 2024	35,088	551	5,374	5,535	3	428	2	1	525	4,170	1	319	3,748	1,256	7,884	5,264	20	2	5
Feb - 2024	33,406	472	4,204	4,765	11	1,198	3	2	1,532	5,845	1	435	5,061	748	5,893	3,204	15	6	11
Mar - 2024	37,484	538	5,003	4,934	1	1,584	6	3	1,956	5,153	0	318	4,536	1,348	7,208	4,862	13	6	15
Apr - 2024	37,925	746	6,094	5,963	1	1,966	7	3	2,442	6,614	1	602	6,110	660	4,286	2,381	12	8	29
May - 2024	39,413	586	4,898	4,715	1	4,291	13	12	5,415	8,297	2	661	7,044	247	2,314	870	5	3	39
Jun - 2024	39,652	183	1,810	1,718	0	3,078	5	17	3,853	10,285	0	852	8,755	717	5,403	2,947	11	3	15
Jul - 2024	42,050	281	2,504	2,513	0	2,350	1	9	2,871	13,286	2	1,211	12,057	251	3,464	1,230	3	3	14
Aug - 2024	40,768	308	2,848	2,760	0	2,115	1	5	2,682	9,154	13	657	8,065	899	6,747	4,471	15	6	22

Data Source: PANYNJ Airport Noise and Operations Management System (ANOMS)

JFK Runway Utilization – Directional Map and Wind Rose Map



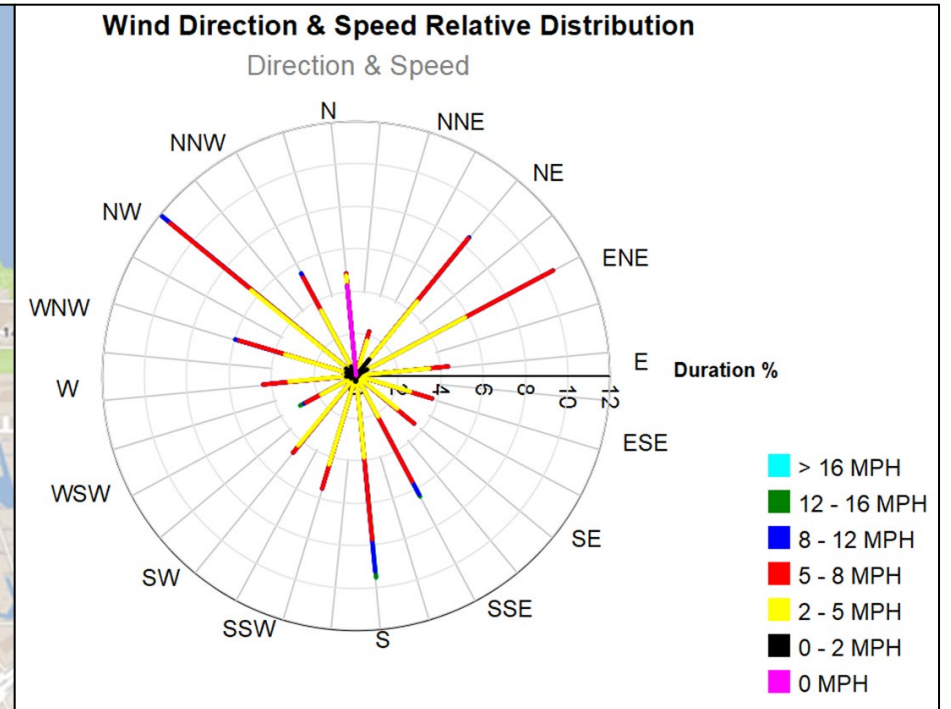
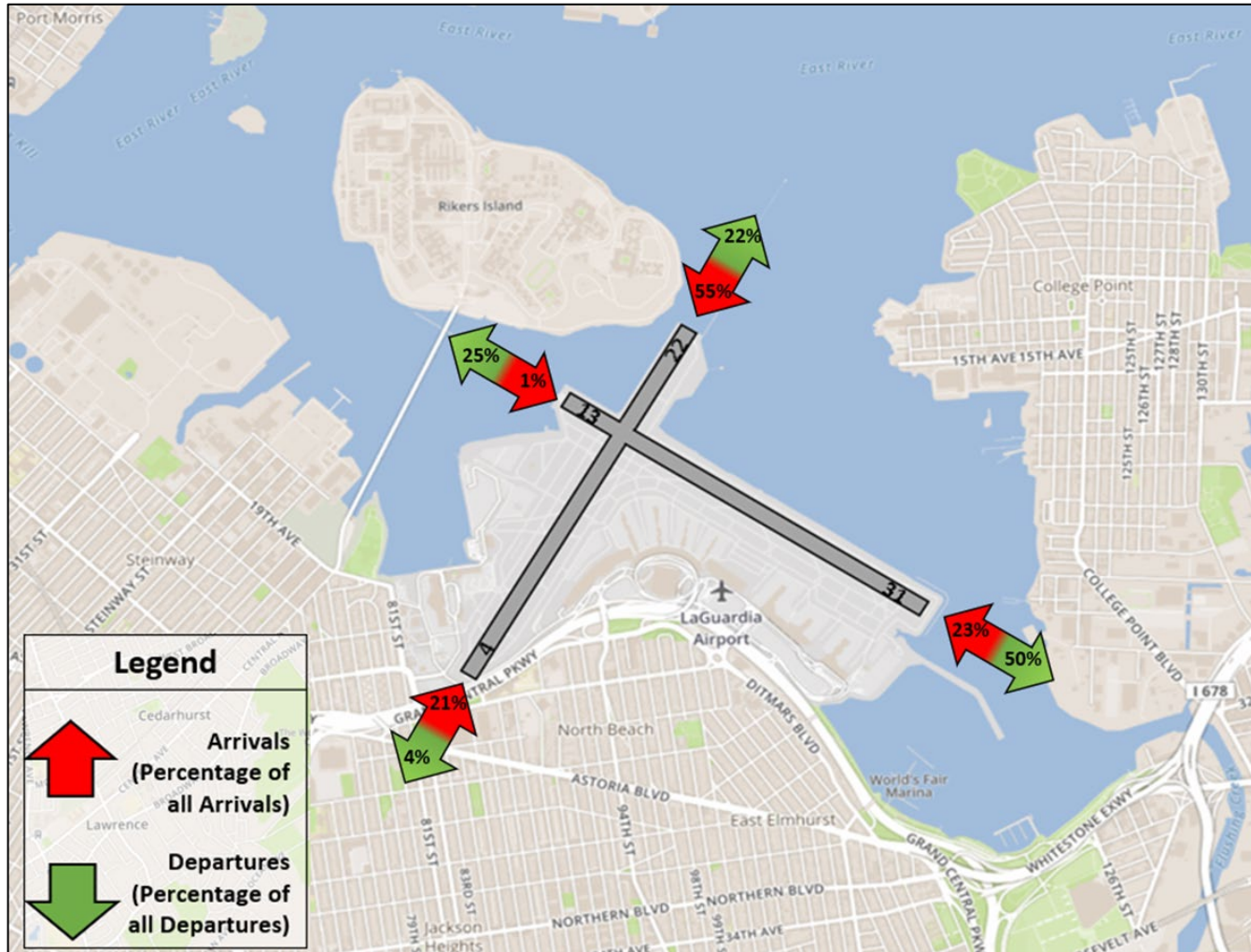
Data Source: PANYNJ Airport Noise and Operations Management System (ANOMS)

LGA Runway Utilization – Monthly Comparison

Month	Total Operations	4 Arr	4 Dep	13 Arr	13 Dep	22 Arr	22 Dep	31 Arr	31 Dep	Unk Arr	Unk Dep
Aug - 2023	30,828	3,106	2,006	180	8,891	9,297	84	2,807	4,453	0	4
Sep - 2023	28,359	7,233	2,946	2	8,464	4,102	122	2,817	2,661	1	11
Oct - 2023	31,258	2,291	4,068	0	7,472	8,710	11	4,606	4,085	4	11
Nov - 2023	29,943	2,077	5,175	64	4,508	7,493	5	5,319	5,290	1	11
Dec - 2023	27,972	2,453	3,703	153	5,616	7,462	324	3,884	4,365	5	7
Jan - 2024	27,206	3,064	4,138	256	4,361	5,840	10	4,430	5,089	3	15
Feb - 2024	27,696	2,611	5,420	37	6,234	5,574	2	5,605	2,200	5	8
Mar - 2024	29,844	3,959	4,104	200	6,475	6,102	23	4,653	4,311	5	12
Apr - 2024	29,524	4,805	2,907	103	8,921	6,512	144	3,316	2,799	5	12
May - 2024	30,700	3,857	2,497	103	10,935	9,281	95	2,071	1,833	8	20
Jun - 2024	28,952	1,716	2,746	45	8,110	10,103	64	2,583	3,570	2	13
Jul - 2024	30,600	3,171	2,364	115	11,327	10,111	26	2,098	1,359	5	24
Aug - 2024	29,008	3,103	3,189	140	7,189	7,970	542	3,268	3,578	6	23

Data Source: PANYNJ Airport Noise and Operations Management System (ANOMS)

LGA Runway Utilization – Directional Map and Wind Rose Map



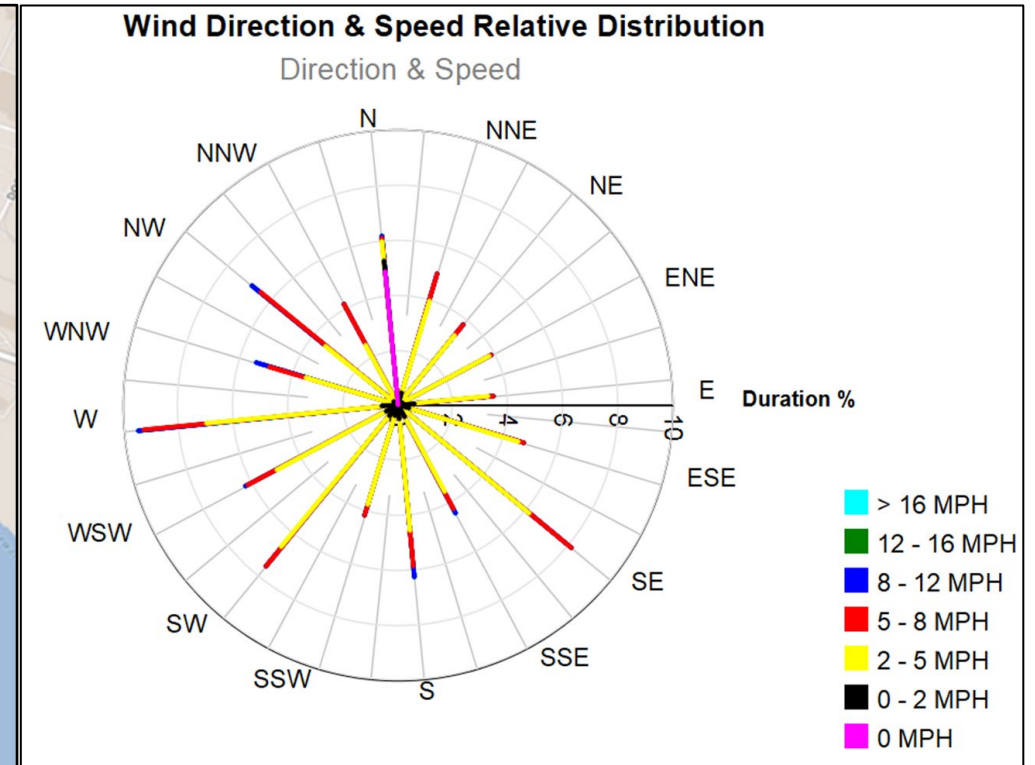
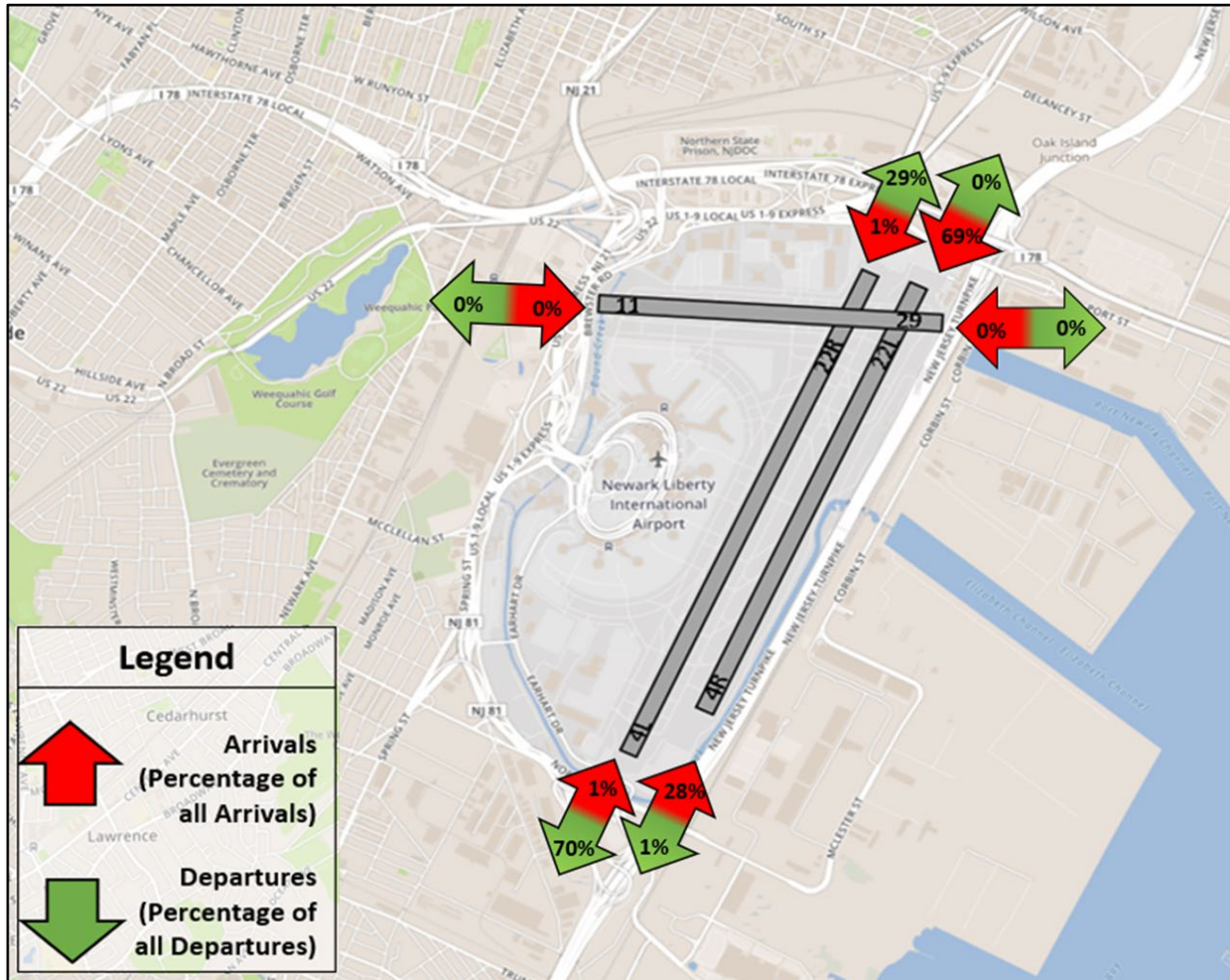
Data Source: PANYNJ Airport Noise and Operations Management System (ANOMS)

EWR Runway Utilization – Monthly Comparison

Month	Total Operations	4L Arr	4L Dep	4R Arr	4R Dep	11 Arr	11 Dep	22L Arr	22L Dep	22R Arr	22R Dep	29 Arr	29 Dep	Unk Arr	Unk Dep
Aug - 2023	36,738	234	6,171	6,044	74	65	29	11,291	169	235	11,936	473	10	0	7
Sep - 2023	34,340	323	11,478	11,130	167	115	20	5,509	53	76	5,440	7	8	2	12
Oct - 2023	36,864	129	7,376	7,315	78	137	18	10,337	106	302	10,838	198	20	7	3
Nov - 2023	33,882	112	6,957	6,855	62	153	16	9,460	53	221	9,852	122	12	3	4
Dec - 2023	34,188	98	6,513	6,530	97	55	14	9,885	52	149	10,419	351	13	4	8
Jan - 2024	31,787	262	7,836	7,679	104	21	23	6,926	45	217	7,889	772	7	1	5
Feb - 2024	31,361	273	8,068	7,853	103	117	15	6,706	63	92	7,413	621	34	0	3
Mar - 2024	34,408	163	7,218	7,171	105	38	14	8,338	89	170	9,616	1,314	145	14	13
Apr - 2024	34,732	194	7,009	6,727	62	90	19	9,804	172	140	10,106	389	10	3	7
May - 2024	36,425	120	7,256	7,110	113	118	22	10,398	185	232	10,650	206	7	0	8
Jun - 2024	34,811	137	3,336	3,145	60	55	11	13,190	149	269	13,832	593	30	1	3
Jul - 2024	35,818	124	4,000	3,760	55	46	13	13,669	116	378	13,624	15	15	1	2
Aug - 2024	33,960	236	4,853	4,669	23	28	9	11,744	165	198	11,942	76	9	4	4

Data Source: PANYNJ Airport Noise and Operations Management System (ANOMS)

EWR Runway Utilization – Directional Map and Wind Rose Map



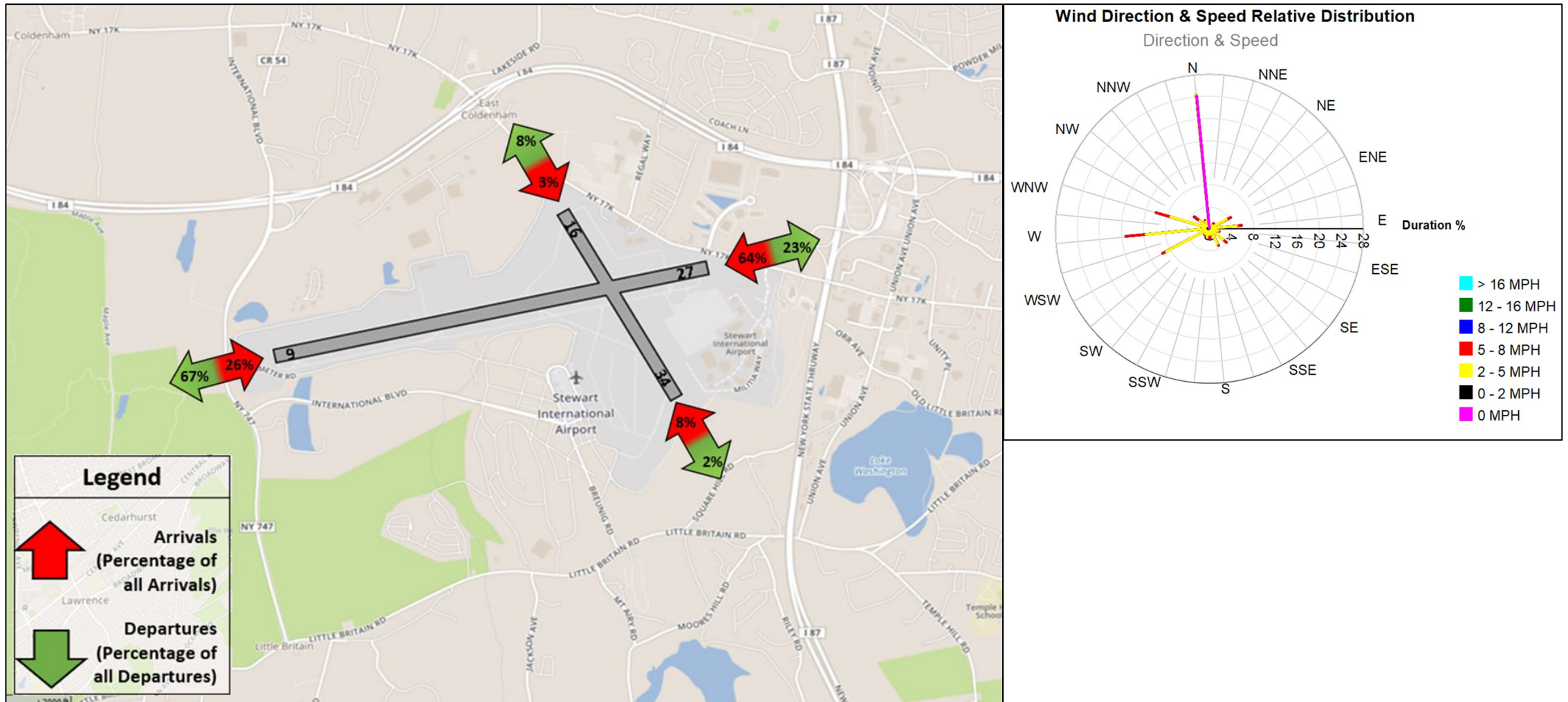
Data Source: PANYNJ Airport Noise and Operations Management System (ANOMS)

SWF Runway Utilization – Monthly Comparison

Month	Total Operations	9 Arr	9 Dep	16 Arr	16 Dep	27 Arr	27 Dep	34 Arr	34 Dep	Unk Arr	Unk Dep
Aug - 2023	1,149	164	127	8	18	362	373	11	21	16	49
Sep - 2023	1,045	167	165	9	9	280	313	22	32	10	38
Oct - 2023	1,168	131	105	6	8	386	419	23	36	9	45
Nov - 2023	1,028	74	68	5	10	384	402	24	14	11	36
Dec - 2023	883	92	92	5	6	307	321	11	16	6	27
Jan - 2024	795	96	102	3	9	261	283	15	15	3	8
Feb - 2024	907	108	103	8	14	284	280	25	37	5	43
Mar - 2024	913	177	173	7	12	218	237	16	25	8	40
Apr - 2024	1,003	224	214	8	19	204	229	30	35	9	31
May - 2024	1,174	230	227	14	22	278	304	19	23	16	41
Jun - 2024	1,186	87	68	8	21	439	446	27	30	6	54
Jul - 2024	1,178	92	80	13	20	411	437	20	25	13	67
Aug - 2024	1,292	157	138	16	12	390	401	48	47	20	63

Data Source: PANYNJ Airport Noise and Operations Management System (ANOMS)

SWF Runway Utilization – Directional Map and Wind Rose Map



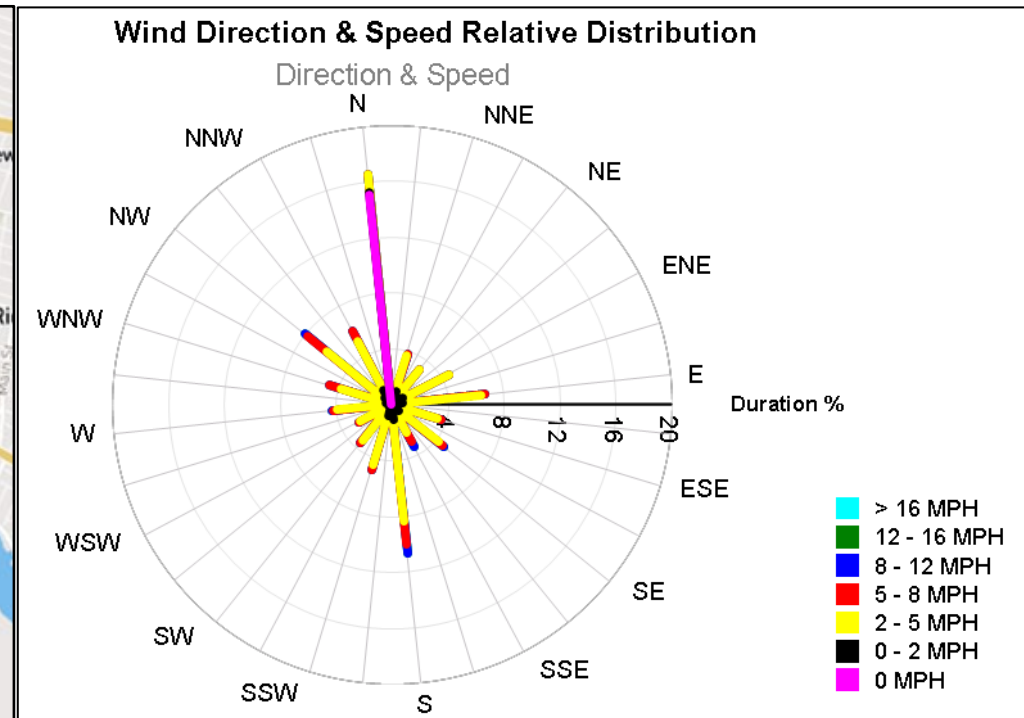
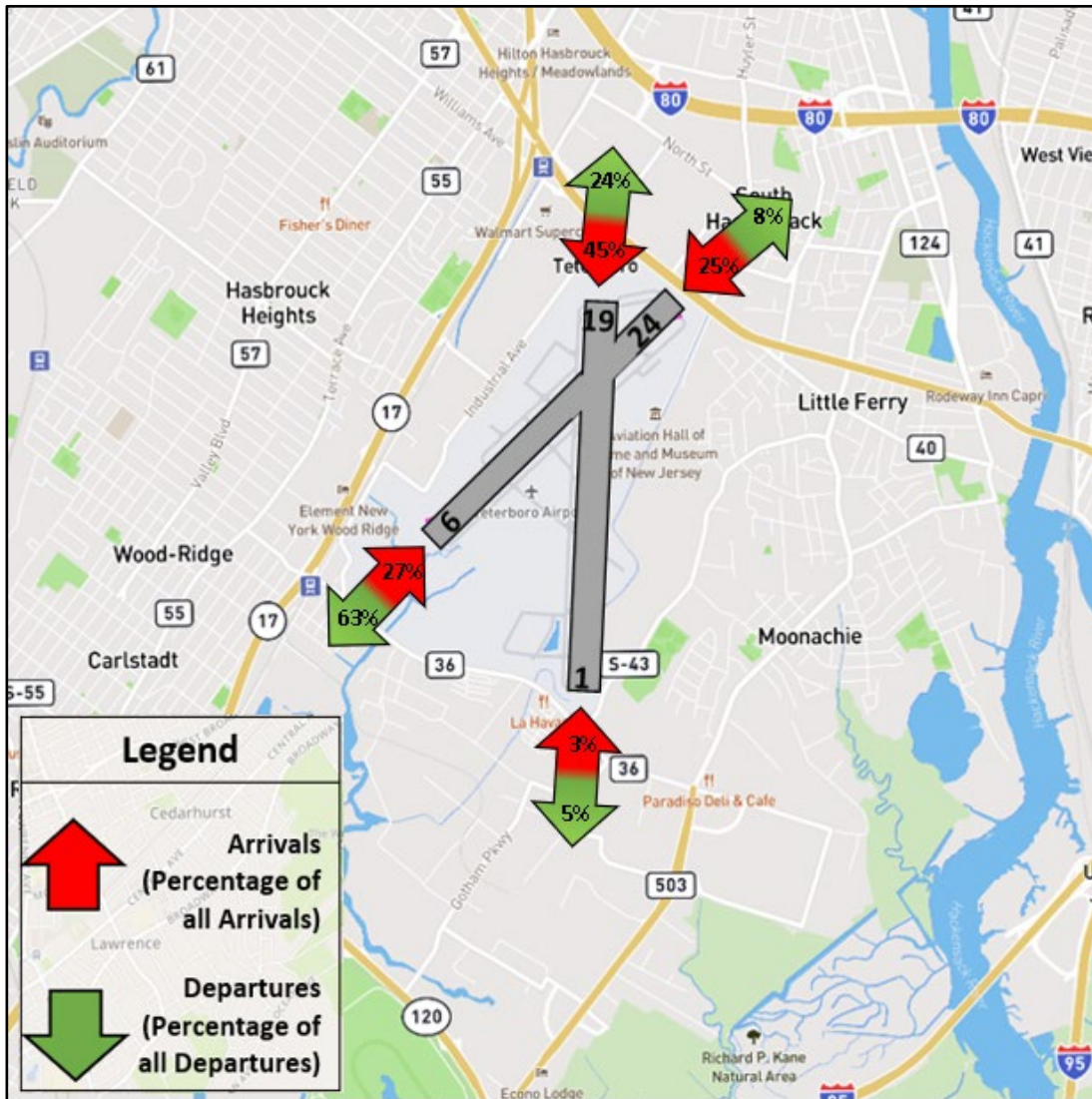
Data Source: PANYNJ Airport Noise and Operations Management System (ANOMS)

TEB Runway Utilization – Monthly Comparison

Month	Total Operations	1 Arr	1 Dep	6 Arr	6 Dep	19 Arr	19 Dep	24 Arr	24 Dep	Unk Arr	Unk Dep
Aug - 2023	11,947	197	1,696	1,834	384	2,979	298	916	3,643	0	0
Sep - 2023	15,319	528	4,675	4,276	606	2,535	549	144	2,006	0	0
Oct - 2023	15,240	477	2,536	2,573	261	3,905	297	575	4,616	0	0
Nov - 2023	15,256	348	2,637	2,658	245	4,085	187	662	4,434	0	0
Dec - 2023	14,886	215	2,893	2,851	221	3,628	162	706	4,210	0	0
Jan - 2024	11,599	283	2,569	2,597	133	2,411	149	614	2,843	0	0
Feb - 2024	11,946	317	2,534	2,657	275	2,545	158	489	2,971	0	0
Mar - 2024	12,924	346	2,530	2,430	179	2,053	116	1,708	3,562	0	0
Apr - 2024	14,003	385	2,548	2,451	272	3,130	178	1,092	3,947	0	0
May - 2024	16,144	369	2,811	2,665	569	4,254	154	838	4,484	0	0
Jun - 2024	14,154	273	534	872	546	4,077	331	1,862	5,659	0	0
Jul - 2024	11,985	261	1,100	1,108	408	2,975	285	1,711	4,137	0	0
Aug - 2024	11,355	194	1,328	1,537	473	2,569	273	1,414	3,567	0	0

Data Source: PANYNJ Airport Noise and Operations Management System (ANOMS)

TEB Runway Utilization – Directional Map and Wind Rose Map



Data Source: PANYNJ Airport Noise and Operations Management System (ANOMS)