

March 2024 Traffic Report

AVIATION DEPARTMENT (Data As Of 4/30/2024 10:02:48 AM)

REGION



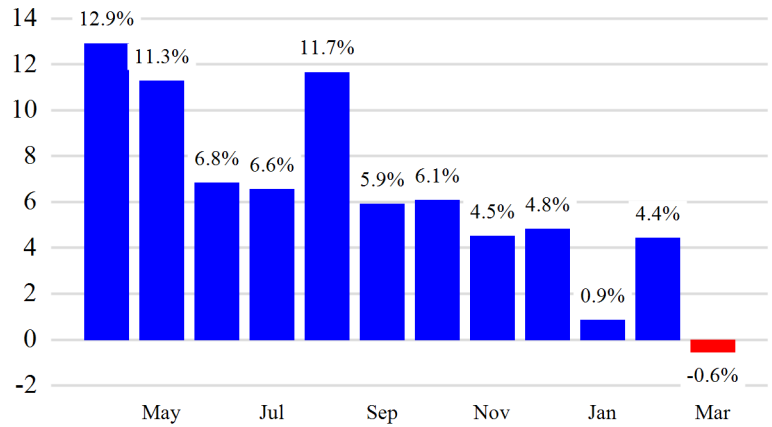
Revenue Passengers

	Curr Month	% Change
	12,074,093	-0.6% ▼
Domestic	8,039,820	-4.6%
International	4,034,273	8.5%
Non-Revenue	305,594	-9.7%

Load Factors	Curr Month
Domestic	85.0%
International	81.9%

83.9%
Avg Load Factor

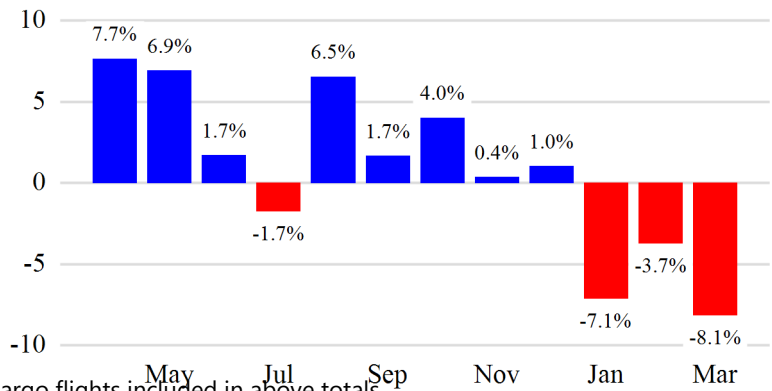
Year over Year % Change in Revenue Passengers - 12 Months



Total Flights

	Curr Month	% Change
	104,300	-8.4% ▼
Excl GA	100,151	-8.1% ▼
Domestic	73,999	-12.5%
International	26,152	7.2%
Gen Aviation	4,149	-15.0%
Cargo Flights*	3,154	-9.8%

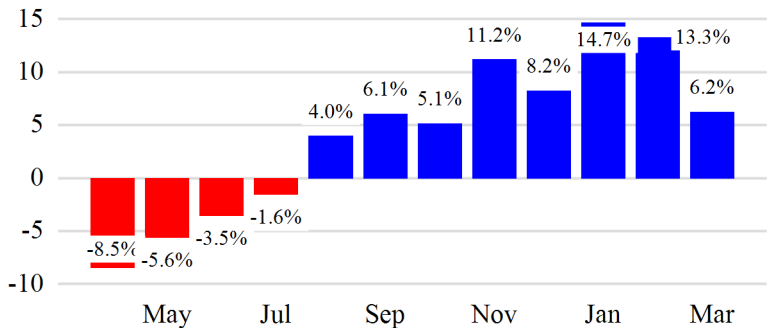
Year over Year % Change in Total Flights (Excl GA) - 12 Months



Cargo (Short Tons)

	Curr Month	% Change
	206,810	6.2% ▲
Domestic	86,829	5.2%
International	119,982	7.0%
Mail	5,579	-47.7%

Year over Year % Change in Cargo - 12 Months



Top 5 Declines in Revenue Passengers by Airline

Airline	Pax Decline	% Decline
JETBLUE AIRWAYS	(339,630)	-16.0%
AMERICAN	(69,285)	-5.0%
UNITED	(60,177)	-2.0%
ALASKA AIRLINES	(28,694)	-14.0%
WESTJET	(8,775)	-61.0%

Top 5 Increases in Revenue Passengers by Airline

Airline	Pax Increase	% Increase
SPIRIT AIRLINES	125,067	32.0%
DELTA	74,084	3.0%
SOUTHWEST AIRLINES	23,630	9.0%
CATHAY PACIFIC	23,437	81.0%
QATAR AIRWAYS	23,100	75.0%

Airport Summary Statistics

JFK Summary

	Current Month	YoY %
Total Revenue Pax	5,092,901	-1.0
Total Flights Including GA	38,237	-7.0
Total Cargo (Short Tons)	142,555	9.6

EWR Summary

	Current Month	YoY %
Total Revenue Pax	4,115,831	-1.0
Total Flights Including GA	34,602	-8.0
Total Cargo (Short Tons)	61,691	-0.5

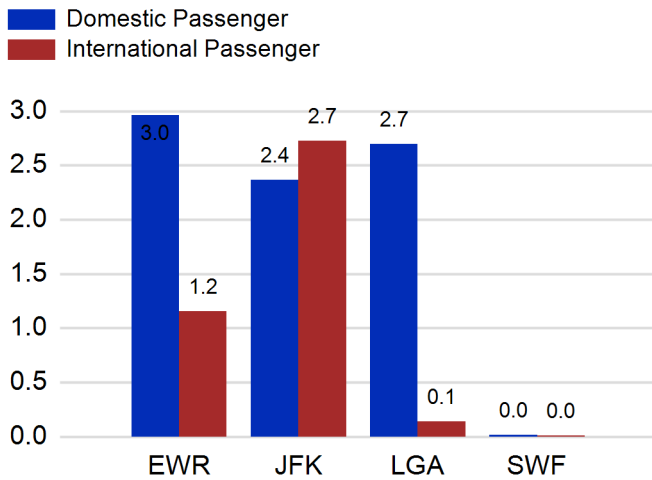
LGA Summary

	Current Month	YoY %
Total Revenue Pax	2,840,153	1.0
Total Flights Including GA	29,700	-9.0
Total Cargo (Short Tons)	501	-8.4

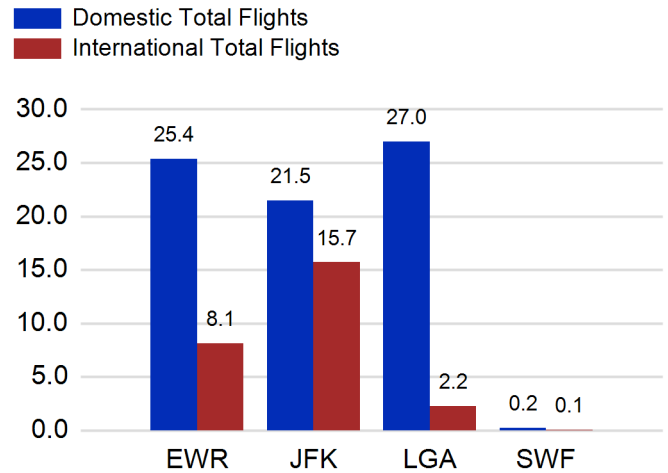
SWF Summary

	Current Month	YoY %
Total Revenue Pax	25,208	-9.0
Total Flights Including GA	1,761	-14.0
Total Cargo (Short Tons)	2,063	-0.8

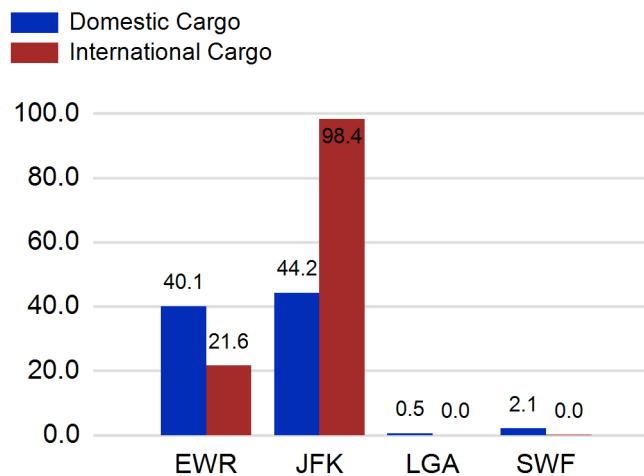
Total Passengers by Airport (Millions)



Total Flights by Airport (Thousands)



Total Cargo by Airport (Thousands of Short Tons)



12 Months Ending Passenger & Freight Statistics

Top 20 Airlines Ranking by Passengers & Freight: 12 Months Ending Mar 2024

Airline Name	Domestic	International	Total Pax	% of Tot	Airline Name	Short Tons	% of Tot
UNITED	27,063,590	8,440,374	35,503,964	24.55%	FEDERAL EXPRESS	369,814	15.60%
DELTA	27,757,640	6,361,859	34,119,499	23.59%	UNITED PARCEL	192,218	8.11%
JETBLUE AIRWAYS	14,338,563	6,770,294	21,108,857	14.59%	UNITED	185,904	7.84%
AMERICAN	13,746,250	3,529,545	17,275,795	11.94%	DELTA	113,176	4.77%
SPIRIT AIRLINES	5,020,314	0	5,020,314	3.47%	KALITTA AIR LLC	110,424	4.66%
SOUTHWEST AIRLINES	3,230,440	0	3,230,440	2.23%	ATLAS AIR	89,374	3.77%
ALASKA AIRLINES	2,297,812	0	2,297,812	1.59%	AMERICAN	79,563	3.36%
AIR CANADA	0	1,830,200	1,830,200	1.27%	AIR TRANSPORT INT'L.(BAX Inc.)	79,283	3.34%
BRITISH AIRWAYS	0	1,733,275	1,733,275	1.20%	BRITISH AIRWAYS	55,142	2.33%
AIR FRANCE	0	1,199,418	1,199,418	0.83%	LUFTHANSA	54,033	2.28%
EMIRATES AIRLINES	0	1,074,339	1,074,339	0.74%	CATHAY PACIFIC	52,824	2.23%
VIRGIN ATLANTIC	0	1,058,155	1,058,155	0.73%	KOREAN	50,241	2.12%
AVIANCA	0	1,037,234	1,037,234	0.72%	CARGOLUX AIRLINES	48,523	2.05%
LUFTHANSA	0	899,287	899,287	0.62%	CHINA AIRLINES	44,898	1.89%
AER LINGUS	0	769,753	769,753	0.53%	VIRGIN ATLANTIC	39,670	1.67%
TURKISH AIRLINES	0	768,728	768,728	0.53%	ABX AIR INC	37,947	1.60%
EL AL	254	688,470	688,724	0.48%	AIR CHINA	34,062	1.44%
SAS	0	587,753	587,753	0.41%	CHINA CARGO AIRLINES	33,829	1.43%
LATAM AIRLINES	0	568,731	568,731	0.39%	TURKISH AIRLINES	32,645	1.38%
AIR INDIA	0	562,148	562,148	0.39%	ASIANA	30,643	1.29%

Passengers & Freight by Market - 12 Months Ending

Market	Passengers	Freight (Short Tons)
TRANSATLANTIC	26,817,887	857,237
CANADA	4,319,144	7,577
CARIBBEAN + BERMUDA	8,799,863	11,173
CENTRAL AND SOUTH AMERICA	4,666,127	61,072
DOMESTIC	92,099,236	1,000,205
MEXICO	2,452,509	12,596
TRANSPACIFIC	3,018,656	412,365
PUERTO RICO	2,458,803	8,759

Additional Data

Airline Schedules (ADI): Non-Stop Destinations

	Region	Flights (Daily)	Cities
Domestic	Domestic	2264.5	111
	Puerto Rico	35.9	3
	Total	2,300.4	114.00
International	Canada	170.5	8
	Caribbean & Bermuda	176.8	24
	Central & South America	79.0	18
	Mexico	49.6	6
	Transatlantic	305.0	56
	Transpacific	36.9	11
	Total	817.8	123.00
Total	3,118.2	237.00	

Airline Schedules (ADI): Carriers & Aircraft Type

	Aircraft Type	Flights (Daily)	Carriers
Domestic	Commuter	809.2	4
	Narrow Body	1440.3	11
	Wide Body	51.0	4
	Total	2,300.4	19.00
International	Commuter	163.3	5
	Narrow Body	326.9	21
	Wide Body	327.6	59
	Total	817.8	85.00
Total	Total	3,118.2	104.00

Passenger Demographics (ACI ASQ Surveys - 2023)

Transport Mode	Trip Type	Gender
Bus/Shuttle	Business	M
Other	Leisure	F
Private car dropped off by someone	Annual Flights	Residency
Private/Company Car	1-2	United States
Rail/Subway	3-5	Other
Rental Car	6-10	Connect
Ridesharing (e.g. Uber)	11-20	Local Origin/Destination
Taxi/Limo	21+	Connecting

Ground Transportation

	Curr Month	% Change		Curr Month	% Change
<i>Paid Parked Cars</i>	322,553	-0.3	<i>Total Air Train Passengers</i>	2,423,461	-17.0
<i>GTC Bookings</i>	0		<i>Paid Howard Beach Passengers</i>	153,705	27.3
<i>Airport Coach Passengers</i>	34,276	19.3	<i>Paid Jamaica Passengers</i>	585,762	21.4
<i>Taxis Dispatched**</i>	0	-100.0	<i>Paid EWR Passengers</i>	155,020	-28.5
			<i>On-Airport (Unpaid) Passengers</i>	1,528,974	-27.1

Airlines for American Carriers (USA)

	Curr Month	% Change
<i>Freight:revenue ton miles (000)</i>	0	

Regional Airports: Other

	Curr Month	% Change
<i>TEB flight movements</i>	13,319	-1.8
<i>ISP Total passengers</i>	121,843	20.2
<i>HPN Total passengers</i>	208,204	1.2