

# April 2024 Traffic Report

AVIATION DEPARTMENT (Data As Of 6/3/2024 3:48:13 PM)

# REGION



## Revenue Passengers

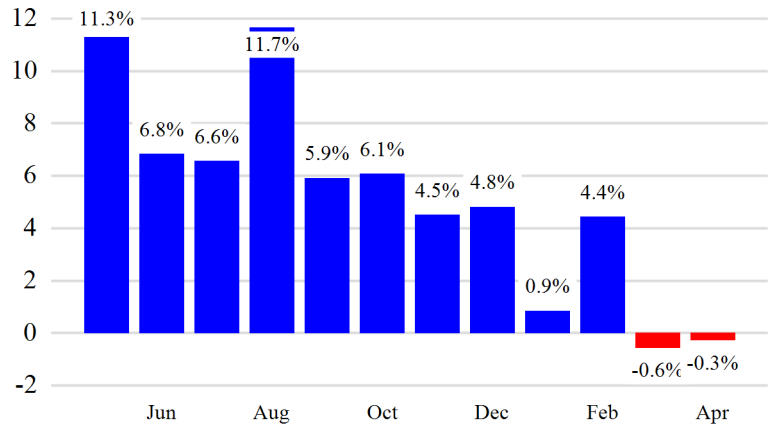
	Curr Month	% Change
	12,157,198	-0.3% <span style="color:red">▼</span>
Domestic	7,890,576	-3.5%
International	4,266,622	6.3%
Non-Revenue	308,492	-20.2%

Load Factors	Curr Month
Domestic	83.4%
International	82.2%

83.0%  
Avg Load Factor

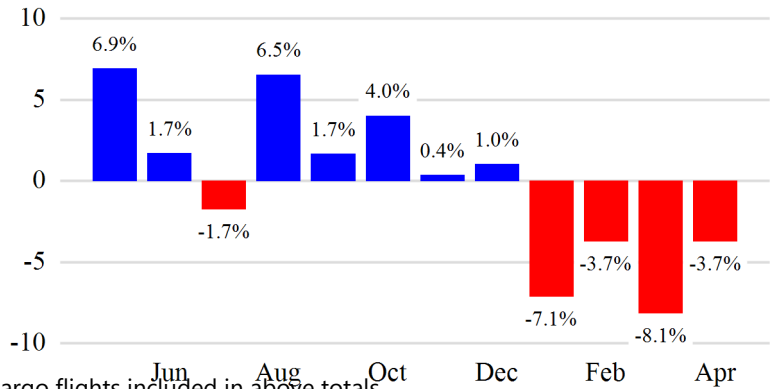
Year over Year % Change in Revenue Passengers - 12 Months



## Total Flights

	Curr Month	% Change
	105,346	-3.7% <span style="color:red">▼</span>
<b>Excl GA</b>	100,599	-3.7% <span style="color:red">▼</span>
Domestic	73,558	-7.1%
International	27,041	6.9%
Gen Aviation	4,747	-3.7%
Cargo Flights*	2,993	-8.6%

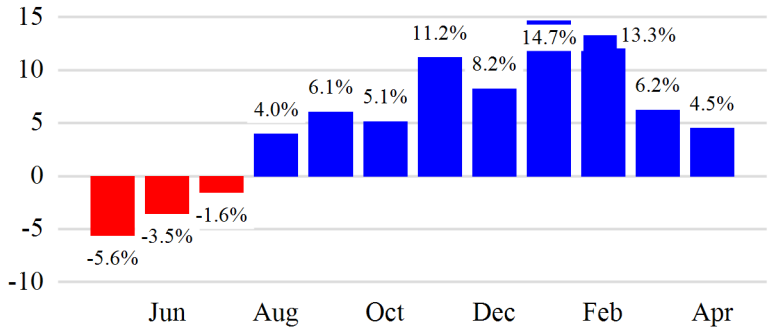
Year over Year % Change in Total Flights (Excl GA) - 12 Months



## Cargo (Short Tons)

	Curr Month	% Change
	188,644	4.5% <span style="color:blue">▲</span>
Domestic	82,049	10.1%
International	106,595	0.6%
Mail	5,706	-37.5%

Year over Year % Change in Cargo - 12 Months



### Top 5 Declines in Revenue Passengers by Airline

Airline	Pax Decline	% Decline
JETBLUE AIRWAYS	(293,774)	-15.0%
AMERICAN	(87,995)	-6.0%
UNITED	(37,126)	-1.0%
ALASKA AIRLINES	(23,821)	-11.0%
SINGAPORE AIRLINES	(10,605)	-26.0%

### Top 5 Increases in Revenue Passengers by Airline

Airline	Pax Increase	% Increase
SPIRIT AIRLINES	159,883	44.0%
DELTA	70,881	2.0%
FRONTIER AIRLINES	33,031	87.0%
QATAR AIRWAYS	20,461	72.0%
LUFTHANSA	17,866	25.0%

## Airport Summary Statistics

### JFK Summary

	Current Month	YoY %
Total Revenue Pax	5,206,634	0.0
Total Flights Including GA	38,904	-3.0
Total Cargo (Short Tons)	131,545	6.9

### EWR Summary

	Current Month	YoY %
Total Revenue Pax	4,129,297	0.0
Total Flights Including GA	35,008	-3.0
Total Cargo (Short Tons)	54,592	-0.9

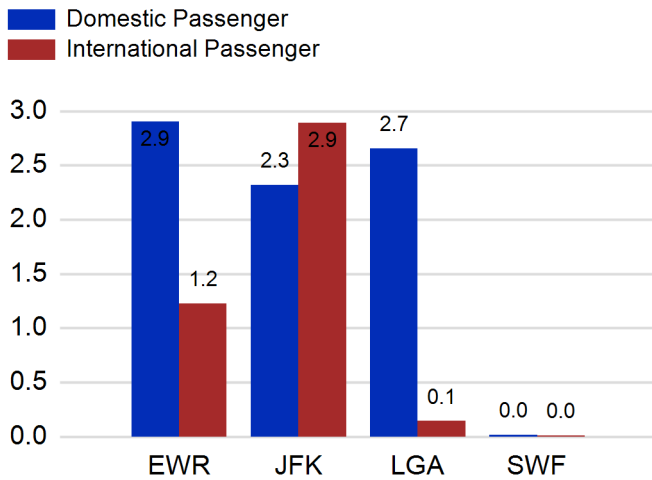
### LGA Summary

	Current Month	YoY %
Total Revenue Pax	2,797,207	1.0
Total Flights Including GA	29,593	-3.0
Total Cargo (Short Tons)	483	-7.8

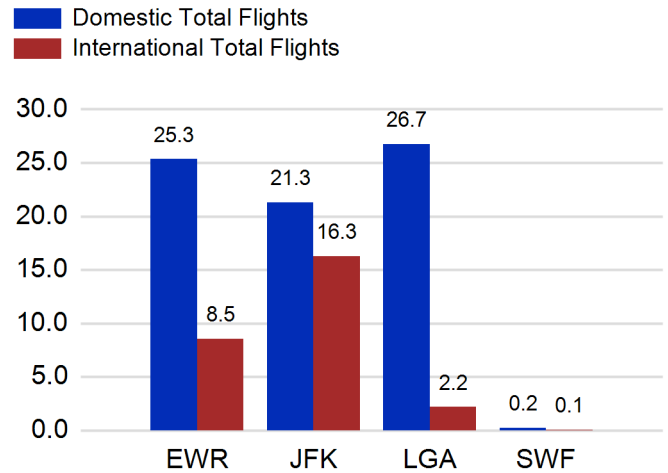
### SWF Summary

	Current Month	YoY %
Total Revenue Pax	24,060	-7.0
Total Flights Including GA	1,841	-11.0
Total Cargo (Short Tons)	2,024	14.8

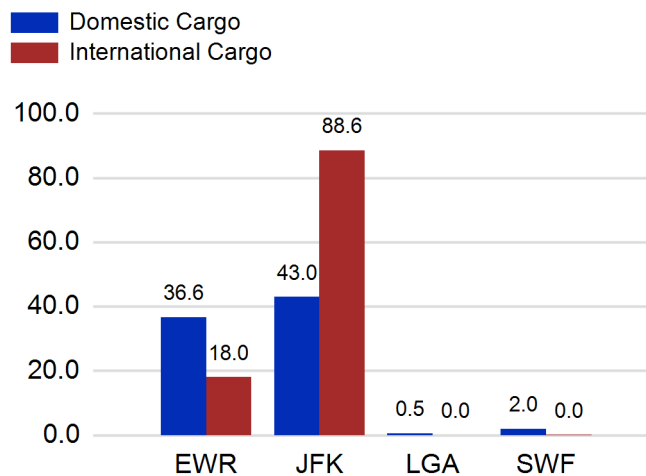
### Total Passengers by Airport (Millions)



### Total Flights by Airport (Thousands)



### Total Cargo by Airport (Thousands of Short Tons)



### 12 Months Ending Passenger & Freight Statistics

#### Top 20 Airlines Ranking by Passengers & Freight: 12 Months Ending Apr 2024

Airline Name	Domestic	International	Total Pax	% of Tot	Airline Name	Short Tons	% of Tot
UNITED	26,961,553	8,505,285	35,466,838	24.53%	FEDERAL EXPRESS	370,165	15.56%
DELTA	27,816,507	6,373,873	34,190,380	23.64%	UNITED PARCEL	194,123	8.16%
JETBLUE AIRWAYS	13,989,166	6,825,917	20,815,083	14.40%	UNITED	184,875	7.77%
AMERICAN	13,686,148	3,501,652	17,187,800	11.89%	DELTA	115,160	4.84%
SPIRIT AIRLINES	5,180,197	0	5,180,197	3.58%	KALITTA AIR LLC	111,164	4.67%
SOUTHWEST AIRLINES	3,226,471	0	3,226,471	2.23%	ATLAS AIR	92,282	3.88%
ALASKA AIRLINES	2,273,991	0	2,273,991	1.57%	AMERICAN	79,382	3.34%
AIR CANADA	0	1,836,137	1,836,137	1.27%	AIR TRANSPORT INT'L.(BAX Inc.)	77,713	3.27%
BRITISH AIRWAYS	0	1,739,247	1,739,247	1.20%	BRITISH AIRWAYS	55,270	2.32%
AIR FRANCE	0	1,195,251	1,195,251	0.83%	LUFTHANSA	53,557	2.25%
EMIRATES AIRLINES	0	1,064,623	1,064,623	0.74%	CATHAY PACIFIC	53,169	2.23%
VIRGIN ATLANTIC	0	1,059,050	1,059,050	0.73%	KOREAN	50,197	2.11%
AVIANCA	0	1,049,675	1,049,675	0.73%	CARGOLUX AIRLINES	48,042	2.02%
LUFTHANSA	0	917,153	917,153	0.63%	CHINA AIRLINES	43,195	1.82%
TURKISH AIRLINES	0	777,864	777,864	0.54%	VIRGIN ATLANTIC	40,179	1.69%
AER LINGUS	0	763,311	763,311	0.53%	ABX AIR INC	38,048	1.60%
EL AL	254	704,829	705,083	0.49%	AIR CHINA	34,602	1.45%
SAS	0	592,643	592,643	0.41%	TURKISH AIRLINES	34,151	1.44%
LATAM AIRLINES	0	572,181	572,181	0.40%	CHINA CARGO AIRLINES	34,067	1.43%
AIR INDIA	0	571,024	571,024	0.39%	ASIANA	30,810	1.30%

#### Passengers & Freight by Market - 12 Months Ending

Market	Passengers	Freight (Short Tons)
TRANSATLANTIC	26,892,935	858,420
CANADA	4,306,930	7,426
CARIBBEAN + BERMUDA	8,879,993	10,980
CENTRAL AND SOUTH AMERICA	4,708,167	61,736
DOMESTIC	91,805,532	1,007,821
MEXICO	2,469,872	12,889
TRANSPACIFIC	3,069,709	411,224
PUERTO RICO	2,465,856	8,658

## Additional Data

### Airline Schedules (ADI): Non-Stop Destinations

	Region	Flights (Daily)	Cities
Domestic	Domestic	2349.7	109
	Puerto Rico	38.3	3
	<b>Total</b>	<b>2,387.9</b>	<b>112.00</b>
International	Canada	174.6	8
	Caribbean & Bermuda	182.2	23
	Central & South America	77.8	17
	Mexico	48.0	6
	Transatlantic	357.0	57
	Transpacific	37.3	11
	<b>Total</b>	<b>876.9</b>	<b>122.00</b>
<b>Total</b>	<b>3,264.8</b>	<b>234.00</b>	

### Airline Schedules (ADI): Carriers & Aircraft Type

	Aircraft Type	Flights (Daily)	Carriers
Domestic	Commuter	848.9	4
	Narrow Body	1495.0	11
	Wide Body	44.1	4
<b>Total</b>	<b>Total</b>	<b>2,387.9</b>	<b>19.00</b>
International	Commuter	166.9	5
	Narrow Body	337.8	22
	Wide Body	372.2	60
<b>Total</b>	<b>Total</b>	<b>876.9</b>	<b>87.00</b>
<b>Total</b>	<b>Total</b>	<b>3,264.8</b>	<b>106.00</b>

### Passenger Demographics (ACI ASQ Surveys - 2023)

Transport Mode	Trip Type	Gender
Bus/Shuttle	Business	M
Other	Leisure	F
Private car dropped off by someone	<b>Annual Flights</b>	<b>Residency</b>
Private/Company Car	1-2	United States
Rail/Subway	3-5	Other
Rental Car	6-10	<b>Connect</b>
Ridesharing (e.g. Uber)	11-20	Local Origin/Destination
Taxi/Limo	21+	Connecting

### Ground Transportation

	Curr Month	% Change		Curr Month	% Change
<i>Paid Parked Cars</i>	330,087	2.1	<i>Total Air Train Passengers</i>	2,485,654	1.0
<i>GTC Bookings</i>	0		<i>Paid Howard Beach Passengers</i>	143,296	-14.6
<i>Airport Coach Passengers</i>	39,019	25.1	<i>Paid Jamaica Passengers</i>	611,271	23.5
<i>Taxis Dispatched</i>	325,166	-9.7	<i>Paid EWR Passengers</i>	164,846	-24.4
			<i>On-Airport (Unpaid) Passengers</i>	1,566,241	-0.9

### Airlines for American Carriers (USA)

	Curr Month	% Change
<i>Freight:revenue ton miles (000)</i>	0	

### Regional Airports: Other

	Curr Month	% Change
<i>TEB flight movements</i>	14,454	0.9
<i>ISP Total passengers</i>	128,504	20.0
<i>HPN Total passengers</i>	198,324	-4.5